

The CIPCA Monitor

December 30, 2010

Vol. 10 Issue 3

Inside this issue of the CIPCA Monitor

View from the Chair
Safeway Bottling Plant Tour
From Steel Toes to Stilettos
News from the EPA
2010 Fall Conference Review
Graphs
Comments

Hello CIPCA, and welcome to a special late, or as I would like to say “accommodating” version of our newsletter. Things have been busy in my neck of the woods as I’m sure they are in yours as well. This newsletter will highlight a few changes in CIPCA and a few changes in the industry. Later in the newsletter you will find a review of CIPCA’s 2010 Fall Conference. This information was taken directly from the evaluation forms that were returned throughout conference.

This year we initiated a few changes for our conference that were recommended on evaluation forms from years prior. You found yourself in a new venue, had different food choices and changes in the format of the Conference itself. Most changes went as planned and, as you will see, the general sentiment concerning the conference was pretty positive. This year’s evaluation forms will continue to allow us to improve future events. On behalf of the executive committee, I would like to thank everyone that filled out a form. I would also like to encourage you to fill them out in the future as well.

Please look through this edition of the CIPCA Monitor for links that will take you to a variety of additional information on some of the current issues that we may all be interested in.

-Scott Caldwell

The Colorado Industrial Pretreatment Coordinators Association (CIPCA) is an organization expressly for individuals who have a professional relationship within the Industrial Pretreatment profession.



Please send all questions, comments, and especially **submissions** to:

SCOTT CALDWELL
CIPCA NEWSLETTER EDITOR
4049 NORTH 75TH STREET
BOULDER, COLORADO 80301

E: CALDWELLS@BOULDERCOLORADO.GOV
P: 303.413.7363
F: 303.413.7373

CIPCA Fall Conference



View from the Chair & Bottles!

Bill Thomas
CIPCA Chair, City of Loveland

Hello CIPCA members.

I hope you all had a Merry Christmas and are looking forward to what 2011 has to offer you. I know what it has to offer me; the CIPCA Chair position. To be honest, I was reluctant to volunteer for the position but felt it was necessary to do my part. I also want you to know that there is another great team on the Executive Committee who are willing to do what they can for CIPCA and its members in 2011. Our goal will be to continue to provide you with interesting educational opportunities and tours.

The Executive Committee's first meeting will be January 13, 2011. To help us plan for this year we encourage you to provide us with training ideas, pretreatment issues, possible tours, newsletter items including techniques and success stories you know or heard of. Go to www.cipca.org to find any Committee member's contact information.

Mark your calendars. The first CIPCA general meeting is planned for February 17, 2011. I know we are all busy with projects, annual reports, and perhaps doing more with less, but do take the time to attend a meeting and show your support for CIPCA.

-Always remember that this is your organization and every contribution you can commit to its betterment benefits the whole and is greatly appreciated by all.

"Civilization has so cluttered this elemental man-earth relationship with gadgets and middlemen that awareness of it is growing dim. We fancy that industry supports us, forgetting what supports industry."

-Aldo Leopold
(A Sand County Almanac)

Scott Caldwell
City of Boulder

Aldo Leopold once spoke of the dangers of not owning a farm. He stated that we develop a disassociation between the products on our breakfast table and the sources of these products. Although Aldo was discussing a deeper philosophical detachment of the average person with nature, the same concept can be applied on many different levels. How many of us in modern society think about the conveyance systems necessary to deliver fresh water at a strong pressure to the sinks in their bathrooms on the twelfth floor of their office buildings? Has everyone else just come to expect this type of luxury?

CIPCA was able to tour the bottling plant of Safeway in Denver. Needless to say it got me thinking about the manufacturing and environmental processes that are necessary for me to drink my soft drink at lunch. We were taken on an extensive tour of the plant. We were able to get a first hand glimpse at the manufacturing processes used in this type of facility. We also discussed waste concerns and treatment procedures implemented to maintain compliance with their permit. Breaking the disassociation between products and their sources, conveyance systems and environmental impacts? At least in part!

If you missed it I may be able to send you photos, it may cost you a newsletter article though . . .



From Steel Toes to Stilettos

- A Farewell Article from Natalie Plegge

Page #3

After starting out my career three years ago as a pretreatment specialist at the Littleton/Englewood WWTP, I am venturing out into the great unknown. I have decided to accept a position with Accutest Laboratories. It is not that I don't love pretreatment; I wasn't even looking for a new job. It just so happens that an opportunity I couldn't refuse presented itself, and I *really* wanted to wear high heels.

During my transition to the 'other side,' somehow, I had a feeling that CIPCA was not going to let me leave without completing at least one final task. I just knew Scott was going to hit me up for a final newsletter article; so here are some final thoughts from this short-timer:

Pretreatment was an excellent career choice for me. I learned a great deal of information in my short time at Littleton/Englewood and I have come a long way from doing oil and grease inspections. My pretreatment experiences include public speaking, customer service, permitting, city planning, and regulation, all of which can be useful in a future profession.

Being involved in CIPCA was the ultimate way to learn pretreatment. Taking tours and attending the conferences really helped me gain an understanding of pretreatment regulations and the ways and means of implementing them. Above all, it felt good knowing that there is a large community of great people willing to help with any questions or concerns I might have had. Participating on the CIPCA board was definitely worth the effort. It pushed me further in my pretreatment career. Not only did it help me grow as a pretreatment specialist but also as an individual. It helped me step out of my shell and interact with individuals from other pretreatment programs.

I definitely gained a greater appreciation for small organizations and the effort that it takes from the volunteers to keep members involved. I am proud of all of the work we completed while I was on the CIPCA board. I am looking forward to hearing new ideas from next year's board members. I expect they will do a fantastic job.

So I know I am still relatively new and don't have much ground to stand on, however, I do have one piece of advice I would like to pass down: don't shy away from joining the CIPCA board just because you are uncertain of your capabilities or uncertain of the time commitment; the smallest amount of effort can make the biggest difference. I suggest participating on the board at least once in your pretreatment career, not only for the benefit of the group, but for self-improvement and for benefit of your personal career.

My excitement for the challenges that await me are rivaled only by the sadness of leaving a job that I loved. I am nervous and perhaps a bit uncomfortable stepping into a new job, but as I recall, this is exactly how I felt three years ago. I think once I get the hang of it I will really enjoy my new position as Business Development Manager. The good news is that I still get to interact with pretreatment individuals on a daily basis. I know I am going to miss pretreatment but I couldn't pass up a job that allows me to interact and talk with clients and, let's face it, we all know that I like to talk. Oh, and I get to wear high heels (did I already mention that?). Rock on my pretreatment peeps, I'll catch ya on the flip side – from the 'other side.'



Al Garcia

US EPA Region 8, Water Program Office of
Pollution Prevention / State & Tribal Assistance

On September 27, 2010, EPA announced in a press release that we intend to propose rulemaking to control mercury discharged in dental amalgam waste discharged from dental offices.

WASHINGTON – The U.S. Environmental Protection Agency (EPA) today announced it intends to propose a rule to reduce mercury waste from dental offices. Dental amalgams, or fillings containing mercury, account for 3.7 tons of mercury discharged from dental offices each year. The mercury waste results when old mercury fillings are replaced with new ones. The mercury in dental fillings is flushed into chair-side drains and enters the wastewater systems, making its way into the environment through discharges to rivers and lakes, incineration or land application of sewage sludge. Mercury released through amalgam discharges can be easily managed and prevented.

EPA expects to propose a rule next year and finalize it in 2012. Dental offices will be able to use existing technology to meet the proposed requirements. Amalgam separators can separate out 95 percent of the mercury normally discharged to the local waste treatment plant. The separator captures the mercury, which is then recycled and reused. Until the rule is final, EPA encourages dental offices to voluntarily install amalgam separators. Twelve states and several municipalities already require the installation of amalgam separators in dental offices.

Approximately 50 percent of mercury entering local waste treatment plants comes from dental amalgam waste. Once deposited, certain microorganisms can change elemental mercury into methylmercury, a highly toxic form that builds up in fish, shellfish and animals that eat fish. Fish and shellfish are the main sources of methylmercury exposure to humans. Methylmercury can damage children's developing brains and nervous systems even before they are born. More information on mercury from dental offices:

water.epa.gov/scitech/wastetech/guide/dental/index.cfm.

More information on mercury and the environment:
www.epa.gov/mercury/index.html.

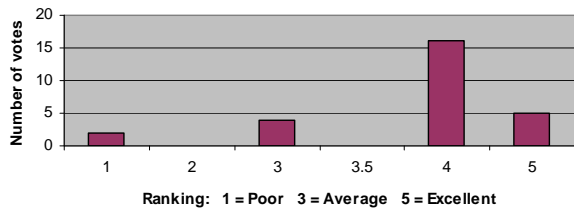
This proposed rulemaking will replace the Voluntary Dental Amalgam Discharge Reduction Program Memorandum of Understanding (MOU) signed by EPA, NACWA, and the ADA in 2008. The intent of this MOU was to promote the voluntary installation of amalgam separators at dental offices and monitor the effectiveness of this voluntary program. Well, this MOU was not effective and flew as well as a lead balloon.

In order to adequately control mercury generated from dental offices, there needs to be effective and mandatory requirements for the dental sector. I believe that this rulemaking can achieve that goal. But what does this mean to local Pretreatment programs? The burden of controlling this sector will be felt most by local programs. The goal of controlling mercury from the dental sector needs to be balanced by the burden to the resources of local Pretreatment programs. I understand this because I ran a local program for many years. I strongly believe the traditional approach of setting numeric limitations and issuing permits to these dental offices with permit limits will not work to achieve the balance of controlling dental mercury vs. the burden to local program's resources. When I managed the Pretreatment program at Littleton-Englewood, we had hundreds of dental offices that had the potential to be categorical industrial users to this rulemaking. That would be a significant burden to the program if they need to permit, sample, and inspect these facilities. I will be an advocate for a model that is familiar to local programs such as a BMP-based approach appears to the most effective to achieve the goal of controlling mercury with resources available to local municipalities.

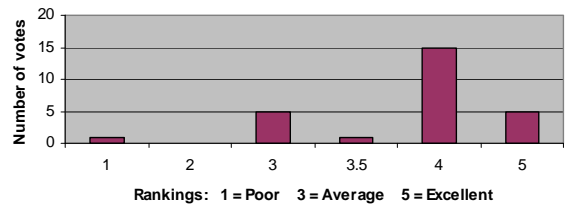
I also strongly believe that local Pretreatment programs should have as much opportunity to participate in this rulemaking. EPA Region 8 and the R8PA plan to have technical discussions and listening sessions for the Dental Amalgam rulemaking at the 2011 Pretreatment Workshop scheduled for April 26-28, 2011 in Bryce Canyon UT. The goal of these presentations is to keep local programs informed and to provide an opportunity for input to the rulemaking managers at EPA HQ. For further information regarding the 2011 EPA Region 8 Pretreatment Workshop, go to www.R8PA.com. I am available to listen to your comments and pass these onto the rulemaking workgroup. In addition, I will rulemaking progress updates in future emails to the region.

Conference Review - Graphs

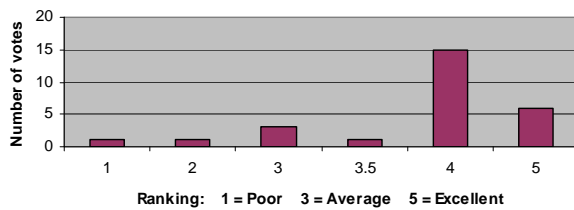
Conference Topics



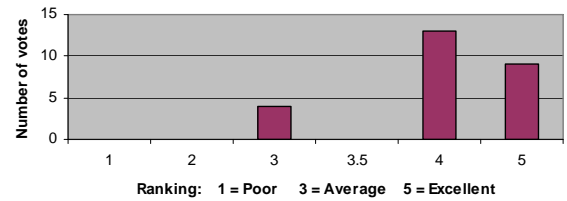
Speaker Presentations



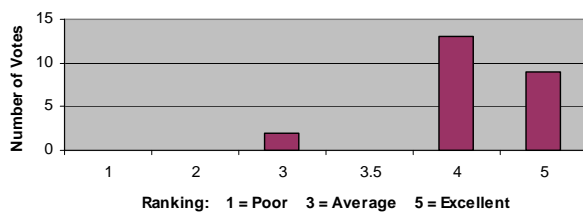
Overall Content of Conference



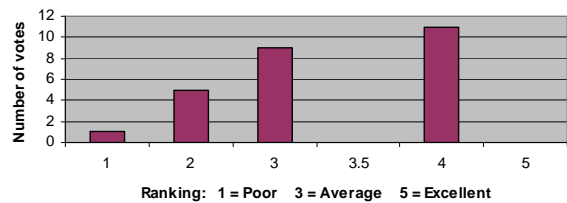
Overall Format of Conference



Opportunity to Network



Audience Participation



The sea, the great unifier, is man's only hope. Now, as never before, the old phrase has a literal meaning: we are all in the same boat.

-Jacques Yves Cousteau



C I P C A

COLORADO INDUSTRIAL PRETREATMENT COORDINATORS ASSOCIATION

Striving to make the environment a cleaner, safer place for today's and future generations.

A Very Special Thank You to the Following:

Bill Thomas

CIPCA Chair, City of Loveland

Al Garcia

US EPA Region 8, Water Program Office of Pollution Prevention /
State & Tribal Assistance

Natalie Plegge of Accutest

Former CIPCA Executive Member

Without your contributions we would have no Newsletter!

Help Your Editor!!

Now is the time for improving the CIPCA Newsletter to better suit the needs of our general membership.

Would you like to see a classifieds section? You could post Pretreatment jobs to a pretreatment audience!

All Ideas are welcomed!
All Entries are encouraged!

Please submit articles, without content there is no newsletter and we are always willing to showcase new work!

SCOTT CALDWELL
CIPCA NEWSLETTER EDITOR
4049 NORTH 75TH STREET
BOULDER, COLORADO 80301

E: CALDWELLS@BOULDERCOLORADO.GOV
P: 303.413.7363
F: 303.413.7373

Comments Summary Conference Review Continued

Did you enjoy CIPCA's ½ day workshop?

Yes: 14 No: 1

Do you feel that the Conference was tailored to:
CIPCA Members: 8 Industrial Users: 4

Did you like vendor presentations?

Yes: 11 No: 5

Did you enjoy the new facility?

Yes: 12 No: 1

Did you like the food?

Yes: 10 No: 6 Neither: 4

Did this conference meet your training needs?

Yes: 20 No: 2 Neither: 5

Comments:

- Why is CIPCA not on Facebook or Twitter?
*We are now on Facebook! Check us out by clicking on the link below!
- I loved not getting another 3 ring binder!
- More speakers from the State
- More panel discussions for future events
- No more panel discussions in the future
- Have one advanced topic and one basic topic
- Improve the website
- Start a CIPCA cycling club
- More focus on pretreatment issues
- There was nothing relevant to my daily work
- Possibility of webcasting conference?
- Send out an e-mail survey to solicit presentation ideas

<http://www.facebook.com/#!/pages/Colorado-Industrial-Pretreatment-Coordination-Association/104808416256698>